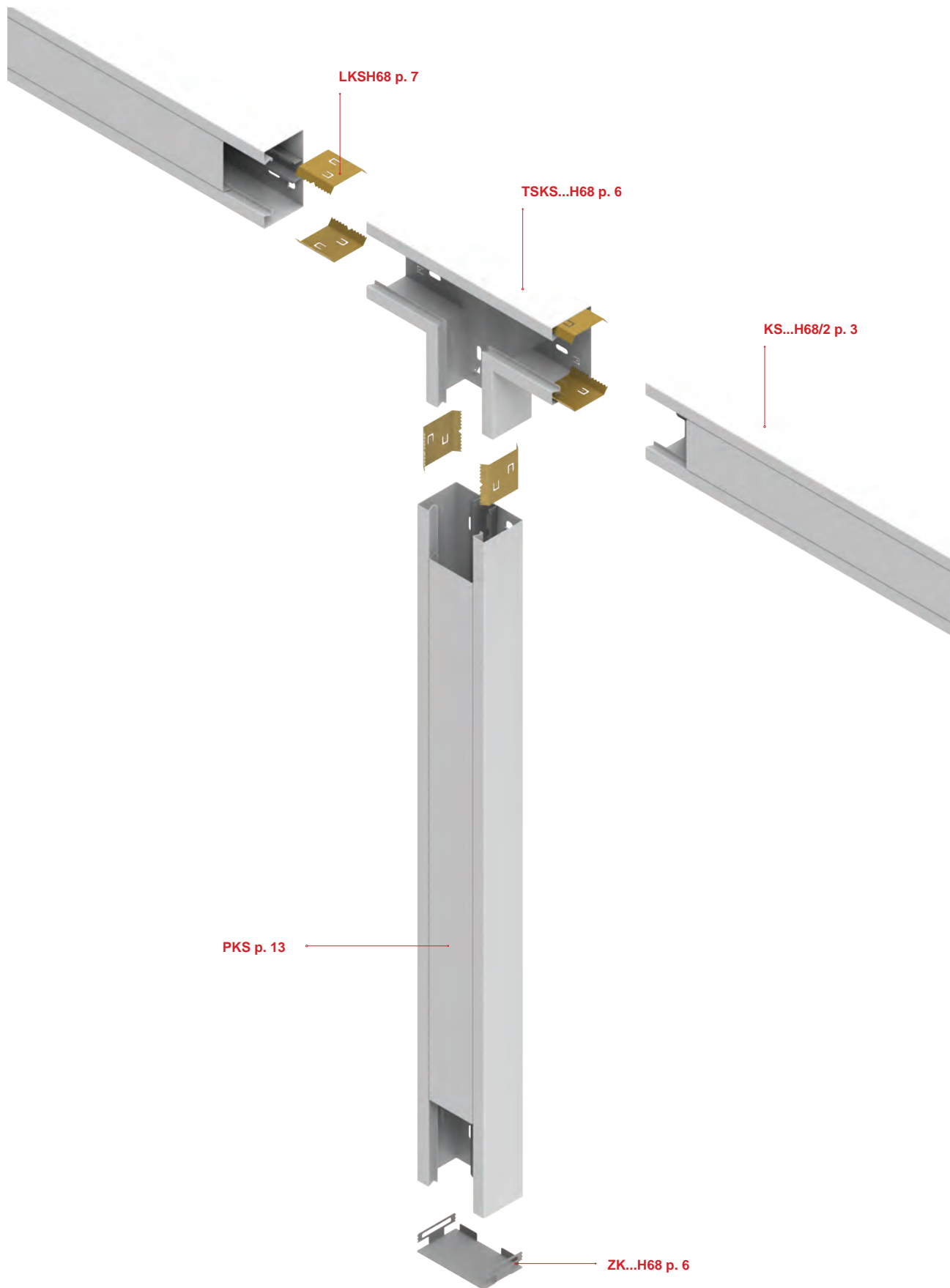


ADVANTAGES OF THE WALL TRUNKING SYSTEM

1. Wall trunking, thanks to its highly pleasing appearance and powder coating, are widely used in:
 - Offices
 - Hospitals
 - Public administration buildings
 - Schools
 - Other public use facilities

In addition to their primary function of supporting wiring, they are an aesthetically pleasing and elegant element of interior design, allowing cables to be routed and sockets/switches to be installed virtually anywhere in a facility.
2. Trunking made of galvanised sheet metal and powder-coated in any RAL colour.
3. Special cutouts that allow for easy and quick connection of grounding cables terminated with connectors.
4. Connecting trunking using resilient connectors to achieve a straight course of two trunking sections and at the same time ensure the electrical continuity of the connection.
5. The cover, which is mounted in the trunking with a latch, enables repeated installation/removal for maintenance or expansion of the electrical system.
6. Ensured electrical continuity of all types of KS, KSd trunking and all dimensions of trunking confirmed by TÜV Rheinland and VDE certificates according to standards: PN-EN 61537:2007, DIN EN 61537:2007-9.
7. A complete system including shaped sections, such as: outer elbows, inner elbows, bends, etc., enabling any formation of the cable route - this ensures speed and professionalism in installation, good aesthetic qualities of the cable route as well as protection of cables from mechanical damage and dirt (covers).
8. Two ranges of side height dimensions: 68 and 110 mm, as well as widths of 115, 130, 170 and 215 mm - the ability to select the optimal trunking for different needs results in a significant reduction in the price of the system.
9. Trunking can be made of aluminium and stainless steel.
10. Fully automated production process of cable trays and all system elements - thus ensuring high quality and repeatability of production with the precision of 0.1 mm
11. Technology and production quality at the highest level globally, thanks to the use of machinery from the best manufacturers on the market.
12. We produce from high quality materials, sheet metal, manufactured in Western European steel mills (Arcelor Mittal Eisenhuttenstadt, Arcelor Mittal Bremen, Arcelor Mittal Liege, Arcelor Mittal Gent) - high quality materials guarantee trouble-free and fast installation, long service life, uniform appearance of all products as well as conformity with safety standards in accordance with obtained certificates.
13. Design and manufacture of custom, non-standard trays and even entire systems complete with fittings and support structures. Any length, width, height, perforation, thickness, type of material and use of any colour do not limit the possibilities in creating aesthetically pleasing and innovative solutions. We are flexible and open to customer needs.
14. All production located in one place and our own hot-dip galvanising plant, flake galvanising plant and powder coating plant - this allows us to fully control the entire production process, maintain the highest quality of the product and reduce lead times.
15. All necessary certificates and approvals for KS and KSd trunking:
 - TÜV Rheinland certification for mechanical strength
 - VDE certification for electrical continuity
 - National Technical Assessment, Certificate of Constancy of Performance and CNBOP-PIB (Scientific and Research Centre for Fire Protection – National Research Institute) Certificate of Approval confirming compliance with E90 system requirements according to DIN 4101-12
 - TÜV Rheinland certification confirming compliance of the production quality management system with the ISO 9001:2015 standard
 - TÜV Rheinland certification confirming compliance with the 14001:2015, concerning environmental protection
 - EC Declaration of Conformity







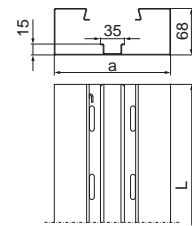
Wall Trunking

KS...H68/2

mat.: SCE

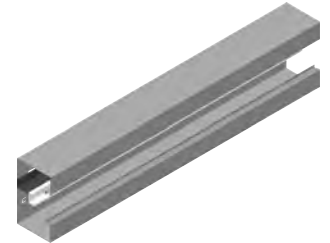
option: L

code	catalogue number	dimension a/L [mm]	weight 1 m [kg]	quantity per package [m]
------	------------------	--------------------	-----------------	--------------------------



Material thickness = 1.0 mm

KS115H68/2	960111	115/2000	2.90	8
KS130H68/2	960113	130/2000	3.00	8
KS170H68/2	960117	170/2000	3.30	4



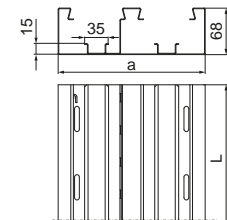
Wall Trunking 2 Comp.

KSd215H68/2

mat.: SCE

option: L

code	catalogue number	dimension a/L [mm]	weight 1 m [kg]	quantity per package [m]
------	------------------	--------------------	-----------------	--------------------------

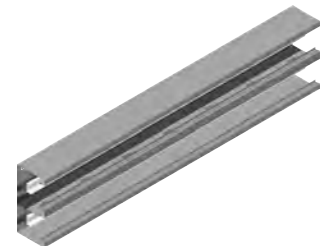


Material thickness = 1.0 mm

KSd215H68/2	960121	215/2000	5.00	4
-------------	--------	----------	------	---

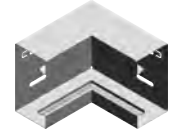
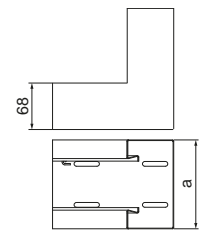
Use:

Routing electrical, telecommunications and computer cable routes indoors.



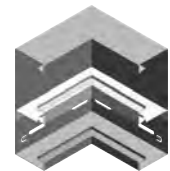
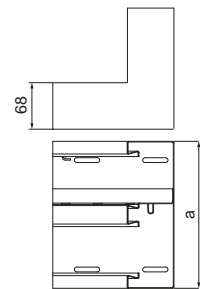
Internal Bend **KWKS...H68** mat.: SCE option: L

code	catalogue number	dimension a [mm]	weight 1 pc. [kg]	quantity per package [pcs.]
Material thickness = 1.0 mm				
KWKS115H68	960211	115	0.77	8
KWKS130H68	960213	130	0.80	8
KWKS170H68	960217	170	0.90	6



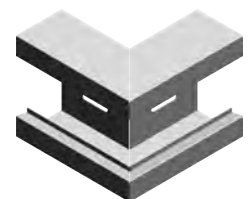
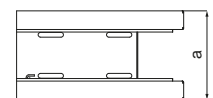
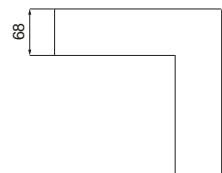
Internal Bend 2 Comp. **KWKSD215H68** mat.: SCE option: L

code	catalogue number	dimension a [mm]	weight 1 pc. [kg]	quantity per package [pcs.]
Material thickness = 1.0 mm				
KWKSD215H68	960221	215	2.10	4



External Bend **KZKS...H68** mat.: SCE option: L

code	catalogue number	dimension a [mm]	weight 1 pc. [kg]	quantity per package [pcs.]
Material thickness = 1.0 mm				
KZKS115H68	960311	115	0.65	8
KZKS130H68	960313	130	0.70	8
KZKS170H68	960317	170	0.80	6



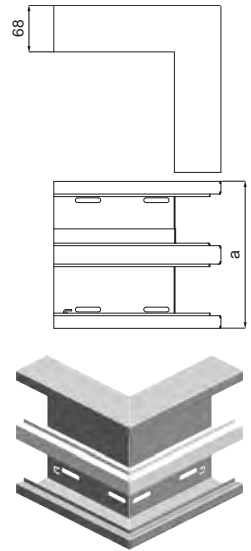
Use:
Routing electrical, telecommunications and computer cable routes indoors.

Additional information:
– cover included



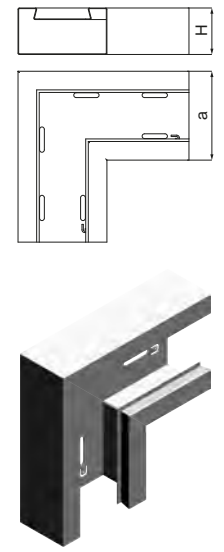
External Bend 2 Comp. **KZKSd215H68** mat.: SCE option: L

code	catalogue number	dimension a [mm]	weight 1 pc. [kg]	quantity per package [pcs.]
Material thickness = 1.0 mm				
KZKSd215H68	960321	215	1.35	4



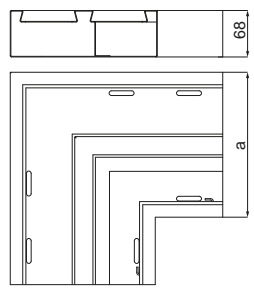
90° Elbow **KPKS...H68** mat.: SCE option: L

code	catalogue number	dimension a [mm]	weight 1 pc. [kg]	quantity per package [pcs.]
Material thickness = 1.0 mm				
KPKS115H68	960411	115	0.92	8
KPKS130H68	960413	130	0.95	8
KPKS170H68	960417	170	1.22	6



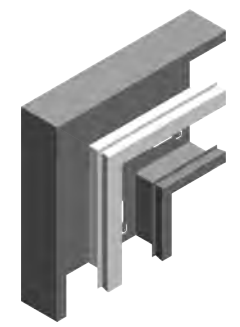
90° Elbow 2 Comp. **KPKSd215H68** mat.: SCE option: L

code	catalogue number	dimension a [mm]	weight 1 pc. [kg]	quantity per package [pcs.]
Material thickness = 1.0 mm				
KPKSd215H68	960421	215	2.00	4

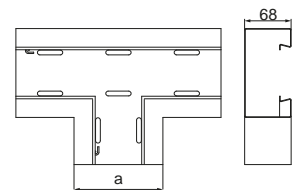


Use:
Routing electrical, telecommunications and computer cable routes indoors.

Additional information:
– cover included



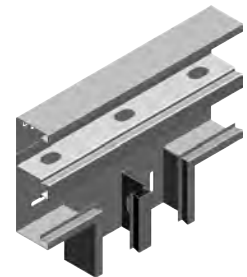
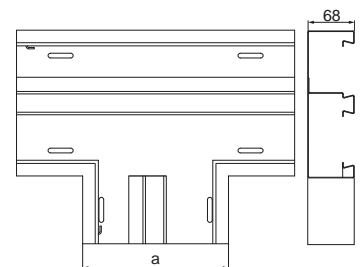
Tee		TSKS...H68		mat.: SCE	option: L
code	catalogue number	dimension a [mm]	weight 1 pc. [kg]	quantity per package [pcs.]	
Material thickness = 1.0 mm					
TSKS115H68	960511	115	1.10	6	
TSKS130H68	960513	130	1.20	6	
TSKS170H68	960517	170	1.45	6	



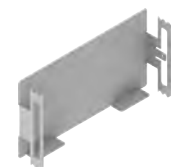
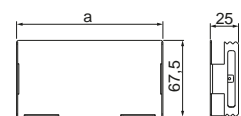
Tee 2 Comp.		TSKSd215H68		mat.: SCE	option: L
code	catalogue number	dimension a [mm]	weight 1 pc. [kg]	quantity per package [pcs.]	
Material thickness = 1.0 mm					
TSKSd215H68	950521	215	2.55	4	

Use:
Routing electrical, telecommunications and computer cable routes indoors.

Additional information:
– cover included



Blind End		ZK...H68		mat.: SCE	option: L
code	catalogue number	dimension a [mm]	weight 1 pc. [kg]	quantity per package [pcs.]	
Material thickness = 1.0 mm					
ZK115H68	960611	115	0.06	50	
ZK130H68	960613	130	0.07	50	
ZK170H68	960617	170	0.09	50	
ZK215H68	960621	215	0.12	50	

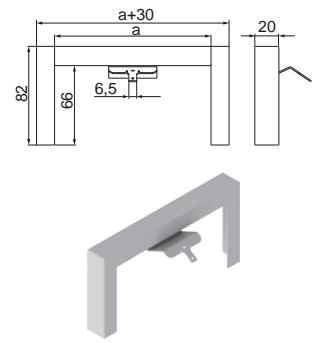


Use:
Cable route termination.



Blind End **ZKK...H68** mat.: SCE option: L

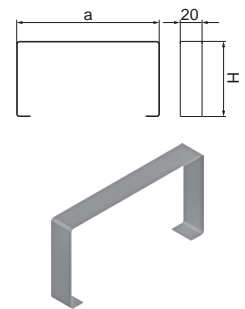
code	catalogue number	dimension a [mm]	weight 1 pc. [kg]	quantity per package [pcs.]
Material thickness = 1.0 mm				
ZKK115H68	961611	115	0.06	50
ZKK130H68	961613	130	0.07	50
ZKK170H68	961617	170	0.09	50
ZKK215H68	961621	215	0.12	50



Use:
Cable route termination.

Protective Cap **NM...H68** mat.: SCE option: L

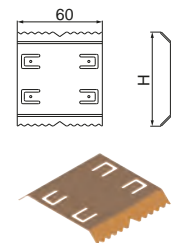
code	catalogue number	dimension a [mm]	weight 1 pc. [kg]	quantity per package [pcs.]
Material thickness = 1.0 mm				
NM115H68	960711	115	0.02	100
NM130H68	960713	130	0.02	100
NM170H68	960717	170	0.03	100
NM215H68	960721	215	0.03	100



Use:
Masking trunking connections.

Connector **LKSH68** mat.: SMS

code	catalogue number	dimension H [mm]	weight 1 pc. [kg]	quantity per package [pcs.]
Material thickness = 1.0 mm				
LKSH68	960900	66	0.03	100



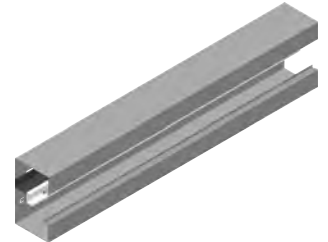
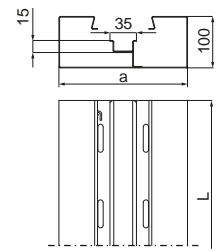
Use:
Connecting wall trunking.



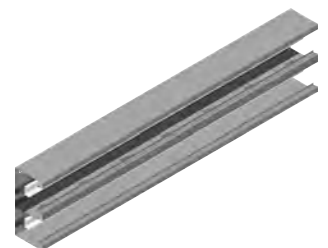
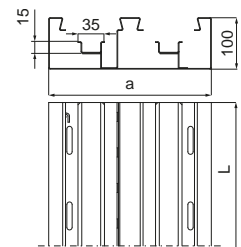
WALL CHANNELS H100



Wall Trunking	KS...H100/2	mat.: SCE	option: L		
code	catalogue number	dimension a/L [mm]	weight 1 m [kg]	quantity per package [m]	
Material thickness = 1.0 mm					
KS115H100/2	910111	115/2000	3.36	4	
KS130H100/2	910113	130/2000	3.46	4	
KS170H100/2	910117	170/2000	3.75	4	



Wall Trunking 2 Comp.	KSd215H100/2	mat.: SCE	option: L		
code	catalogue number	dimension a/L [mm]	weight 1 m [kg]	quantity per package [m]	
Material thickness = 1.0 mm					
KSd215H100/2	910121	215/2000	5.80	4	



Use:
Routing electrical, telecommunications and computer cable routes indoors.

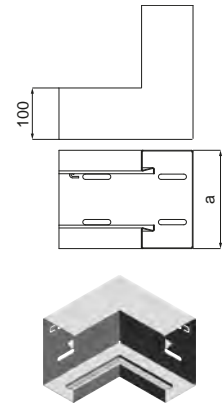


Internal Bend

KWKS...H100

mat.: SCE option: L

code	catalogue number	dimension a [mm]	weight 1 pc. [kg]	quantity per package [pcs.]
Material thickness = 1.0 mm				
KWKS115H100	910211	115	0.90	8
KWKS130H100	910213	130	0.92	8
KWKS170H100	910217	170	1.00	6

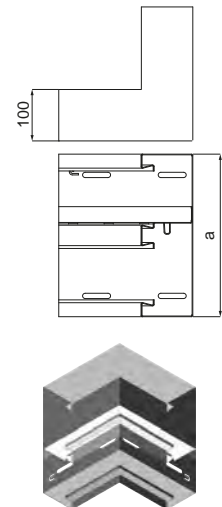


Internal Bend 2 Comp.

KWKSd215H100

mat.: SCE option: L

code	catalogue number	dimension a [mm]	weight 1 pc. [kg]	quantity per package [pcs.]
Material thickness = 1.0 mm				
KWKSd215H100	910221	215	2.55	4

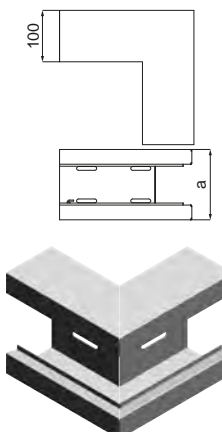


External Bend

KZKS...H100

mat.: SCE option: L

code	catalogue number	dimension a [mm]	weight 1 pc. [kg]	quantity per package [pcs.]
Material thickness = 1.0 mm				
KZKS115H100	910311	115	0.75	8
KZKS130H100	910313	130	0.80	8
KZKS170H100	910317	170	0.91	6

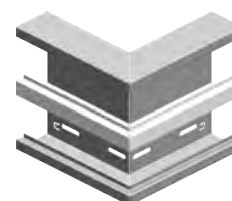
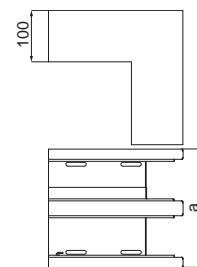


Use:

Routing electrical, telecommunications and computer cable routes indoors.

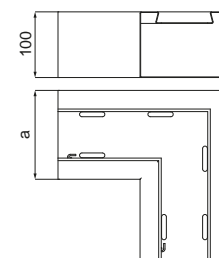
External Bend 2 Comp. **KZKSd215H100** mat.: SCE option: L

code	catalogue number	dimension a [mm]	weight 1 pc. [kg]	quantity per package [pcs.]
Material thickness = 1.0 mm				
KZKSd215H100	910321	215	1.54	4



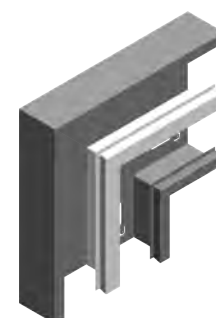
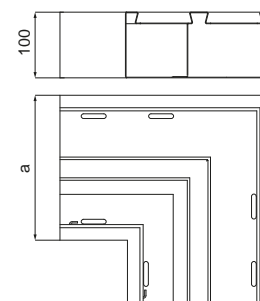
90° Elbow **KPKS...H100** mat.: SCE option: L

code	catalogue number	dimension a [mm]	weight 1 pc. [kg]	quantity per package [pcs.]
Material thickness = 1.0 mm				
KPKS115H100	910411	115	1.00	8
KPKS130H100	910413	130	1.10	8
KPKS170H100	910417	170	1.40	6



90° Elbow 2 Comp. **KPKSd215H100** mat.: SCE option: L

code	catalogue number	dimension a [mm]	weight 1 pc. [kg]	quantity per package [pcs.]
Material thickness = 1.0 mm				
KPKSd215H100	910421	215	2.32	4

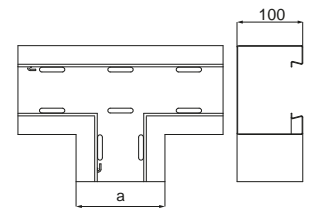


Use:
Routing electrical, telecommunications and computer cable routes indoors.

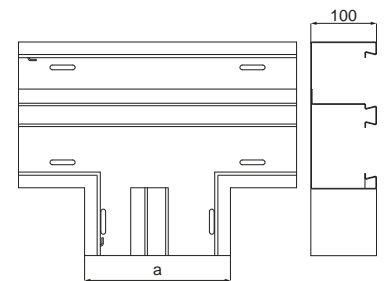
Additional information:
– cover included



Tee		TSKS...H100		mat.: SCE	option: L
code	catalogue number	dimension a [mm]	weight 1 pc. [kg]	quantity per package [pcs.]	
Material thickness = 1.0 mm					
TSKS115H100	910511	115	1.20	6	
TSKS130H100	910513	130	1.30	6	
TSKS170H100	910517	170	1.55	6	



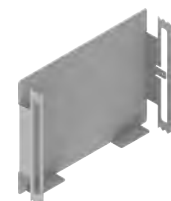
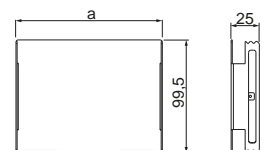
Tee 2 Comp.		TSKSd215H100		mat.: SCE	option: L
code	catalogue number	dimension a [mm]	weight 1 pc. [kg]	quantity per package [pcs.]	
Material thickness = 1.0 mm					
TSKSd215H100	910621	215	2.95	4	



Use:
Routing electrical, telecommunications and computer cable routes indoors.

Additional information:
– cover included

Blind End		ZK...H100		mat.: SCE
code	catalogue number	dimension a [mm]	weight 1 pc. [kg]	quantity per package [pcs.]
Material thickness = 1.0 mm				
ZK115H100	910711	115	0.10	50
ZK130H100	910713	130	0.11	50
ZK170H100	910715	170	0.15	50
ZK215H100	910717	215	0.20	50



Use:
Cable route termination.

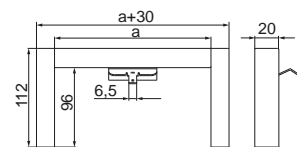
WALL CHANNELS H100



Blind End (painted) ZKK...H100 mat.: SCE option: L

code	catalogue number	dimension a [mm]	weight 1 pc. [kg]	quantity per package [pcs.]
Material thickness = 1.0 mm				
ZKK115H100	910811	115	0.10	50
ZKK130H100	910813	130	0.11	50
ZKK170H100	910817	170	0.15	50
ZKK215H100	910821	215	0.20	50

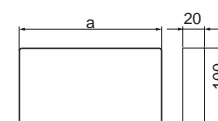
Use:
Cable route termination.



Protective Cap NM...H100 mat.: SCE option: L

code	catalogue number	dimension a [mm]	weight 1 pc. [kg]	quantity per package [pcs.]
Material thickness = 1.0 mm				
NM115H100	910721	115	0.02	100
NM130H100	910723	130	0.02	100
NM170H100	910725	170	0.03	100
NM215H100	910727	215	0.04	100

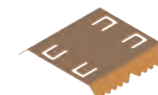
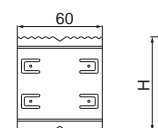
Use:
Masking trunking connections.



Connector LKSH100 mat.: SMS

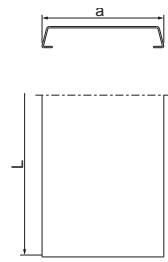
code	catalogue number	dimension H [mm]	weight 1 pc. [kg]	quantity per package [pcs.]
Material thickness = 1.0 mm				
LKSH100	910729	96	0.06	100

Use:
Connecting wall trunking.



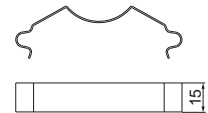


Cover for Wall Trunking		PKS	mat.: SCE	option: L	
code	catalogue number	dimension a/L [mm]	weight 1 m [kg]	quantity per package [m]	
Material thickness = 1.0 mm					
PKS	900100	82/2000	0.80	20	



Use:
Routing electrical, telecommunications and computer cable routes indoors.

Flat Spring		SU	mat.: SMS		
code	catalogue number	weight 1 pc. [kg]	quantity per package [pcs.]		
Material thickness = 1.0 mm					
SU	960800	0.01	100		



Use:
Connecting wall trunking.

1 Gang Surface Box		P1KN71x71	mat.: PA6		
code	catalogue number	depth [mm]	mounting holes spacing [m]	weight 1 pc. [kg]	quantity per package [pcs.]
P1KN71x71	22070	48	0.1	0.06	26



2 Gang Surface Box		P2KN71x142	mat.: PA6		
code	catalogue number	depth [mm]	mounting holes spacing [m]	weight 1 pc. [kg]	quantity per package [pcs.]
P2KN71x142	22071	48	0.1	0.08	26

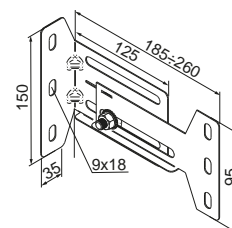


Use:
Installing electrical outlets in wall trunking.

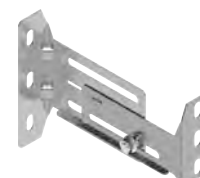
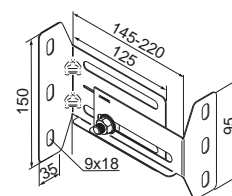
Additional information:

- universal boxes suitable for all types of flush-mounted sockets and switches
- can be combined into multiple sets

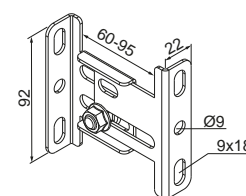
Adjustable Spacer			
code	ODA	mat.: S	option: FP, E, L
code	catalogue number	weight 1 pc. [kg]	quantity per package [pcs.]
Material thickness = 2.0 mm			
ODA	752026	0.37	40



Adjustable Spacer			
code	ODB	mat.: S	option: FP, E, L
code	catalogue number	weight 1 pc. [kg]	quantity per package [pcs.]
Material thickness = 2.0 mm			
ODB	752122	0.37	40



Adjustable Spacer			
code	ODC	mat.: S	option: FP, E, L
code	catalogue number	weight 1 pc. [kg]	quantity per package [pcs.]
Material thickness = 2.0 mm			
ODC	752222	0.13	40





Adjustable Spacer

ODD

mat.: S option: FP, E, L

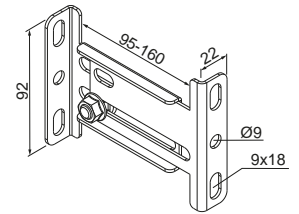
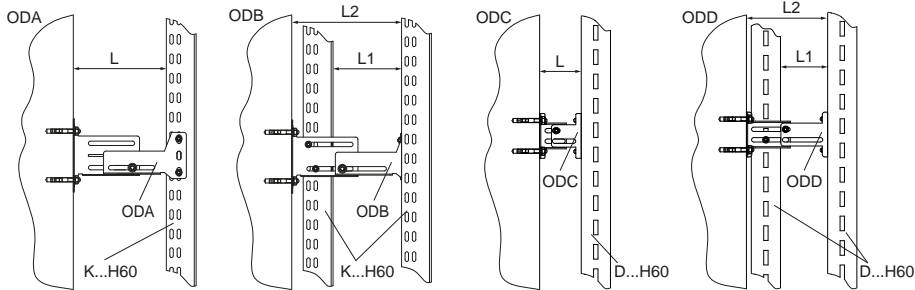
code	catalogue number	weight 1 pc. [kg]	quantity per package [pcs.]
------	------------------	----------------------	-----------------------------------

Material thickness = 2.0 mm

ODD	752223	0.17	40
-----	--------	------	----

Use:

Installing trays, ladders and wall trunking at the proper distance from the wall.

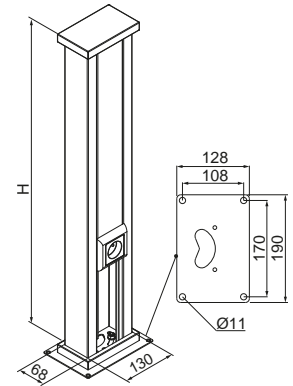


Power Post

SI...

mat.: SCE option: L

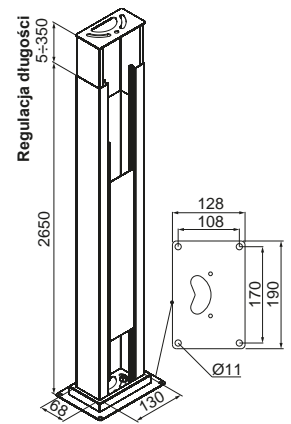
code	catalogue number	dimension H [mm]	weight 1 pc. [kg]	quantity per package [pcs.]
SI250	910911	250	1.85	8
SI500	910913	500	2.85	4
SI700	910915	700	3.65	4



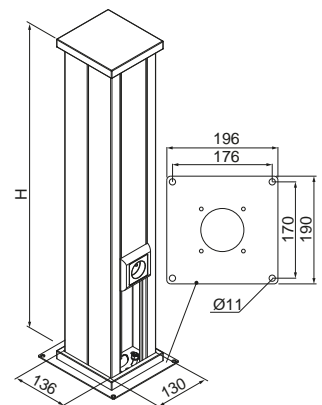
XVI

Power Post	SI2650	mat.: SCE	option: L	
code	catalogue number	weight 1 pc. [kg]	quantity per package [pcs.]	
Material thickness = 1.0 mm				
SI2650	910917	11.50	1	

Use:
Routing electrical routes, telecommunications and computer rooms.



Power Post	SPI...	mat.: SCE	option: L	
code	catalogue number	dimension H [mm]	weight 1 pc. [kg]	quantity per package [pcs.]
Material thickness = 1.0 mm				
SPI250	911011	250	3.15	6
SPI500	911013	500	5.15	4
SPI700	911015	700	6.50	4





Power Post	SPI2650	mat.: SCE	option: L	
code	catalogue number	weight 1 pc. [kg]	quantity per package [pcs.]	
Material thickness = 1.0 mm				
SPI2650	911017	22.30	1	

Use:
Routing electrical routes, telecommunications and computer rooms.

